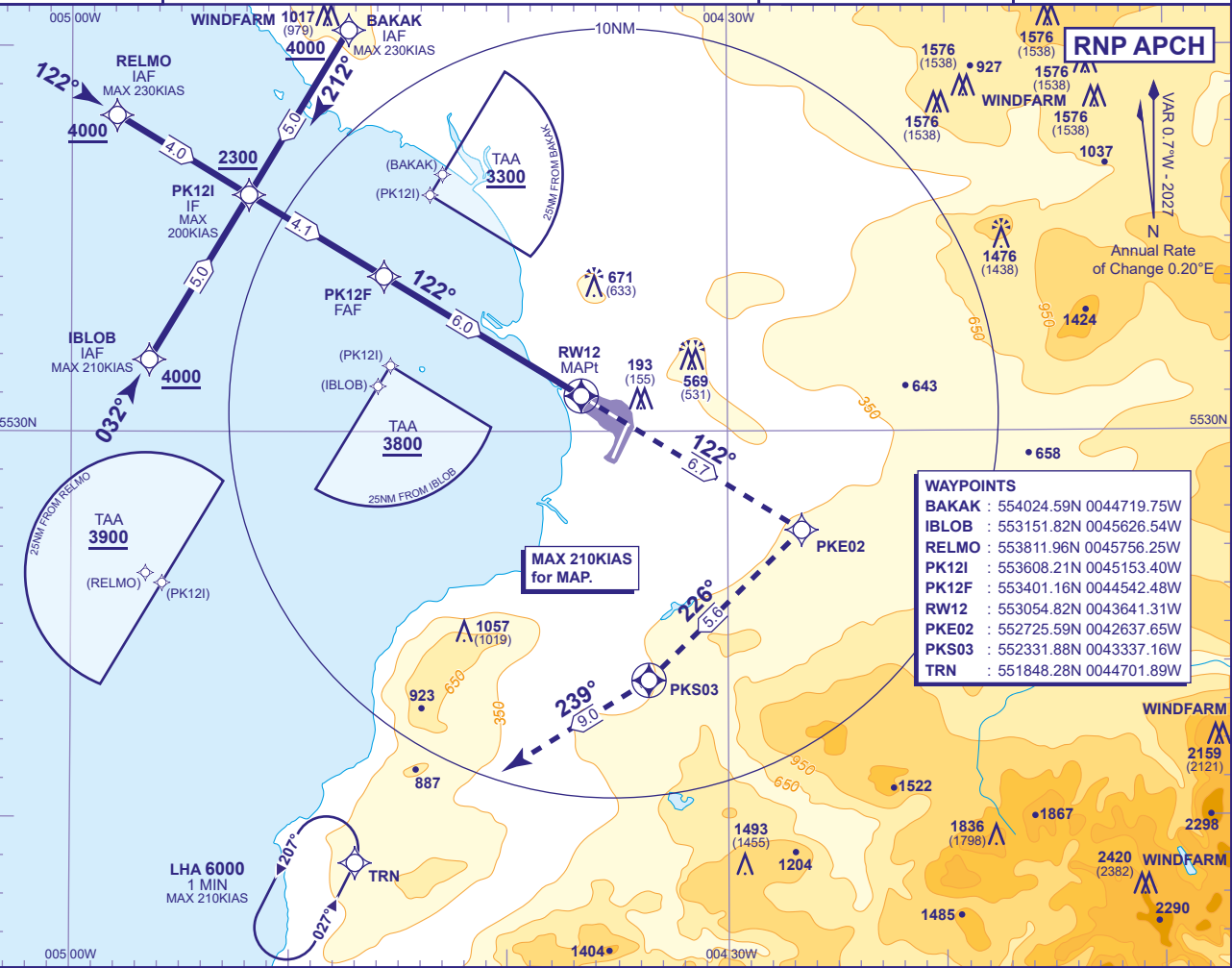


INSTRUMENT APPROACH CHART - ICAO

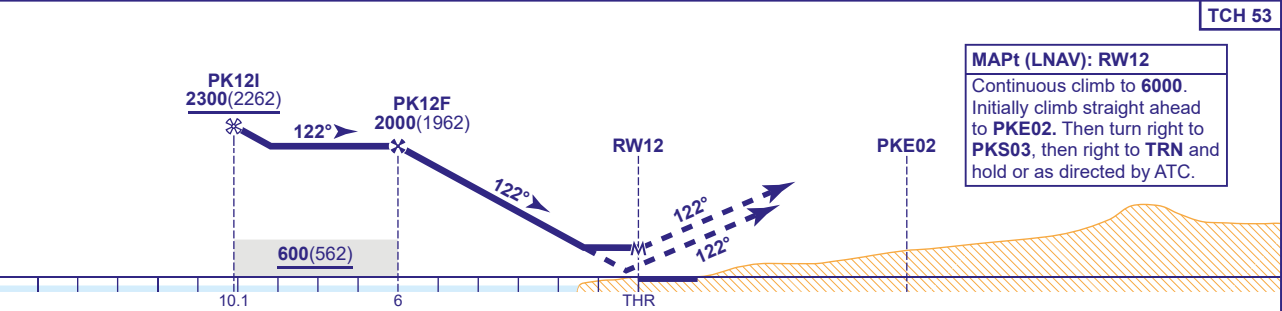
PRESTWICK
RNP
RWY 12
(ACFT CAT A,B,C,D)

<div>39</div> <div>MSA 25NM ARP</div>	APP 129.450	PRESTWICK APPROACH	AD ELEVATION 65	MIN TEMP -15°C TRANSITION ALTITUDE 6000
	TWR 118.150, 127.155	PRESTWICK TOWER	THR ELEVATION 38	
	RAD 129.450, 124.630	PRESTWICK RADAR	OBSTACLE ELEVATION 2420 AMSL (2382) (ABOVE THR)	
	ATIS 121.130	PRESTWICK INFORMATION	BEARINGS ARE MAGNETIC	



WAYPOINTS	
BAKAK	: 554024.59N 0044719.75W
IBLOB	: 553151.82N 0045626.54W
RELMO	: 553811.96N 0045756.25W
PK12I	: 553608.21N 0045153.40W
PK12F	: 553401.16N 0044542.48W
RW12	: 553054.82N 0043641.31W
PKE02	: 552725.59N 0042637.65W
PKS03	: 552331.88N 0043337.16W
TRN	: 551848.28N 0044701.89W

RECOMMENDED PROFILE VNAV Vertical Path Angle 3.0°(LNAV 5.24%), 320FT/NM					
NM to RW12	5	4	3	2	1
ALT(HGT)	1680(1642)	1360(1322)	1050(1012)	730(692)	410(372)



Aircraft Category		A	B	C	D	Rate of descent	G/S KT	160	140	120	100	80
OCA (OCH)	LNAV/VNAV	340(302)	350(312)	370(332)	400(362)		FT/MIN	850	740	640	530	420
	LNAV	420(382)	420(382)	420(382)	420(382)							
VM(C)OCA (OCH AAL)	Total Area	750(685)	870(805)	1070(1005)	1070(1005)							
	SW of RWY 12/30	680(615)	810(745)	910(845)	1070(1005)							

NOTE Portions of this procedure lie outside controlled airspace.

CHANGE (12/25): MAG VAR. MAG HEADINGS.